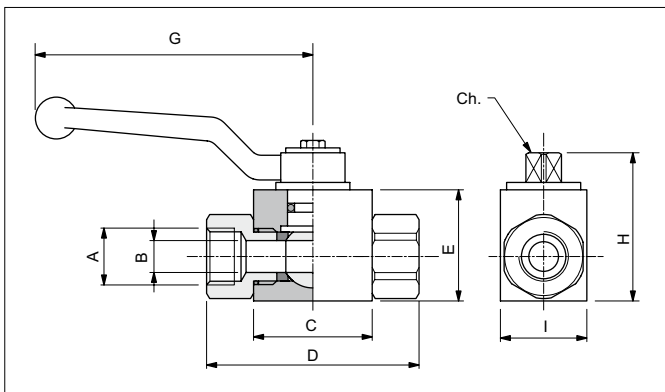
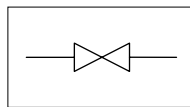


HIGH PRESSURE - 2 WAY BALL VALVES - IN-LINE MOUNTING



High pressure 2 way ball valves for in line mounting.
Steel body with external zinc plating. Cromed steel ball, aluminium lever.

HYDRAULIC SYMBOL

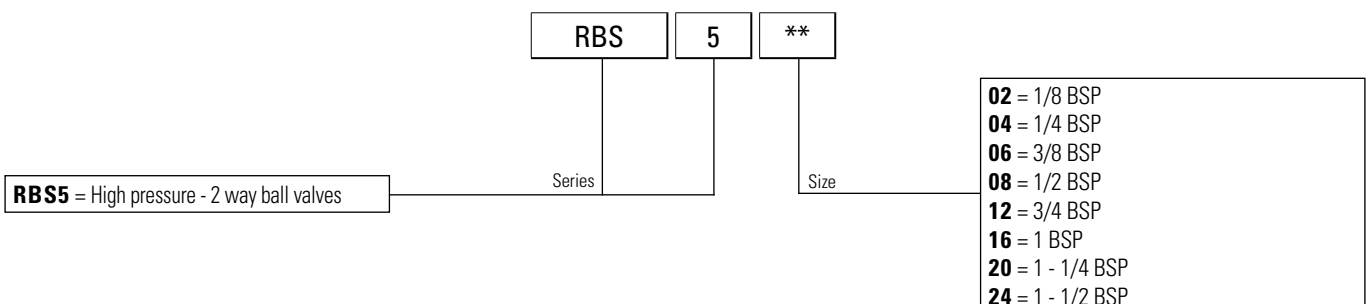


HYDRAULIC FEATURES

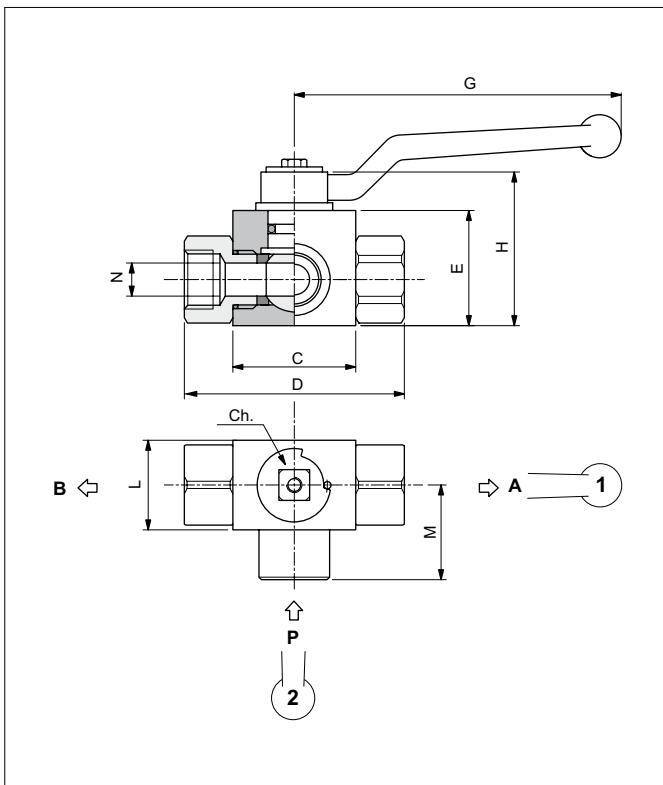
| | |
|--|--------------------------------|
| Hydraulic fluid | DIN 51524 Mineral oils |
| Fluid viscosity | 10 ÷ 500 mm ² /s |
| Fluid temperature | -25°C ÷ 75°C |
| Ambient temperature | -25°C ÷ 60°C |
| Max. contamin. level class with filter | ISO 4406:1999 - class 19/17/14 |

| Code | Thread A | Flow max (l/min) | Pressure max (bar) | B (mm) | C (mm) | D (mm) | E (mm) | G (mm) | H (mm) | I (mm) | Ch (mm) | Weight (kg) |
|--------|-----------|------------------|--------------------|--------|--------|--------|--------|--------|--------|--------|---------|-------------|
| RBS502 | 1/8 BSP | 5 | 500 | 4 | 42 | 71 | 35 | 110 | 49 | 30 | 9 | 0.50 |
| RBS504 | 1/4 BSP | 10 | 500 | 6 | 42 | 71 | 35 | 110 | 49 | 30 | 9 | 0.50 |
| RBS506 | 3/8 BSP | 25 | 500 | 10 | 44 | 73 | 40 | 110 | 54 | 35 | 9 | 0.65 |
| RBS508 | 1/2 BSP | 40 | 500 | 13 | 48 | 83 | 43 | 110 | 57 | 37 | 9 | 0.75 |
| RBS512 | 3/4 BSP | 100 | 400 | 20 | 62 | 95 | 55 | 180 | 73 | 45 | 14 | 1.40 |
| RBS516 | 1 BSP | 150 | 350 | 25 | 66 | 113 | 65 | 180 | 83 | 55 | 14 | 2.15 |
| RBS520 | 1-1/4 BSP | 150 | 350 | 25 | 66 | 121 | 65 | 180 | 83 | 55 | 14 | 2.25 |
| RBS524 | 1-1/2 BSP | 150 | 350 | 25 | 66 | 124 | 65 | 180 | 83 | 55 | 14 | 2.35 |

ORDERING CODE



HIGH PRESSURE - 3 WAY BALL VALVES - IN-LINE MOUNTING

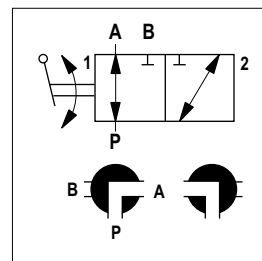


High pressure 3 way ball valves for in line mounting.
Steel body with external zinc plating. Cromed steel ball, aluminium lever.

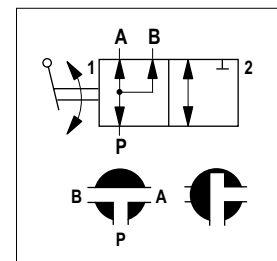
HYDRAULIC FEATURES

| | |
|--|--------------------------------|
| Hydraulic fluid | DIN 51524 Mineral oils |
| Fluid viscosity | 10 ÷ 500 mm ² /s |
| Fluid temperature | -25°C ÷ 75°C |
| Ambient temperature | -25°C ÷ 60°C |
| Max. contamin. level class with filter | ISO 4406:1999 - class 19/17/14 |

HYDRAULIC SYMBOLS



SCHEME "A"



SCHEME "B"

| Code | Thread A-B-P | Flow max (l/min) | Pressure max (bar) | C (mm) | D (mm) | E (mm) | G (mm) | H (mm) | L (mm) | M (mm) | N (mm) | Ch (mm) | Weight (kg) |
|------------|--------------|------------------|--------------------|--------|--------|--------|--------|--------|--------|--------|--------|---------|-------------|
| BK3 A/B 02 | 1/8 BSP | 5 | 400 | 42 | 71 | 35 | 110 | 49 | 30 | 33.5 | 4 | 9 | 0.50 |
| BK3 A/B 04 | 1/4 BSP | 10 | 400 | 42 | 71 | 35 | 110 | 49 | 30 | 33.5 | 6 | 9 | 0.50 |
| BK3 A/B 06 | 3/8 BSP | 25 | 400 | 44 | 73 | 40 | 110 | 54 | 35 | 37.0 | 10 | 9 | 0.70 |
| BK3 A/B 08 | 1/2 BSP | 70 | 350 | 48 | 83 | 43 | 110 | 57 | 37 | 40.0 | 13 | 9 | 0.80 |
| BK3 A/B 12 | 3/4 BSP | 100 | 350 | 62 | 95 | 55 | 180 | 73 | 45 | 52.0 | 20 | 14 | 1.50 |
| BK3 A/B 16 | 1 BSP | 150 | 350 | 66 | 113 | 65 | 180 | 83 | 55 | 60.0 | 25 | 14 | 2.35 |
| BK3 A/B 20 | 1-1/4 BSP | 150 | 350 | 66 | 121 | 65 | 180 | 83 | 55 | 61.5 | 25 | 14 | 2.50 |
| BK3 A/B 24 | 1-1/2 BSP | 150 | 350 | 66 | 124 | 65 | 180 | 83 | 55 | 61.5 | 25 | 14 | 2.70 |

ORDERING CODE

